



ET-6000 series

Quick Start Manual



Version 1.11
Mar. 2007

Package checklist

The package includes the following items:

- One ET-6000 hardware module
- One Quick Start Manual (this manual)
- One software utility CD
- One RS-232 download cable
- One screw driver

Note:

If any of these items are missed or damaged, contact the local distributors for more information. Save the shipping materials and cartons in case you want to ship in the future.

Related documents and firmware

Documents

User Manual: ET6000_User_Manual.pdf

Quick Start Manual: ET6000_QuickStart_Manual.pdf

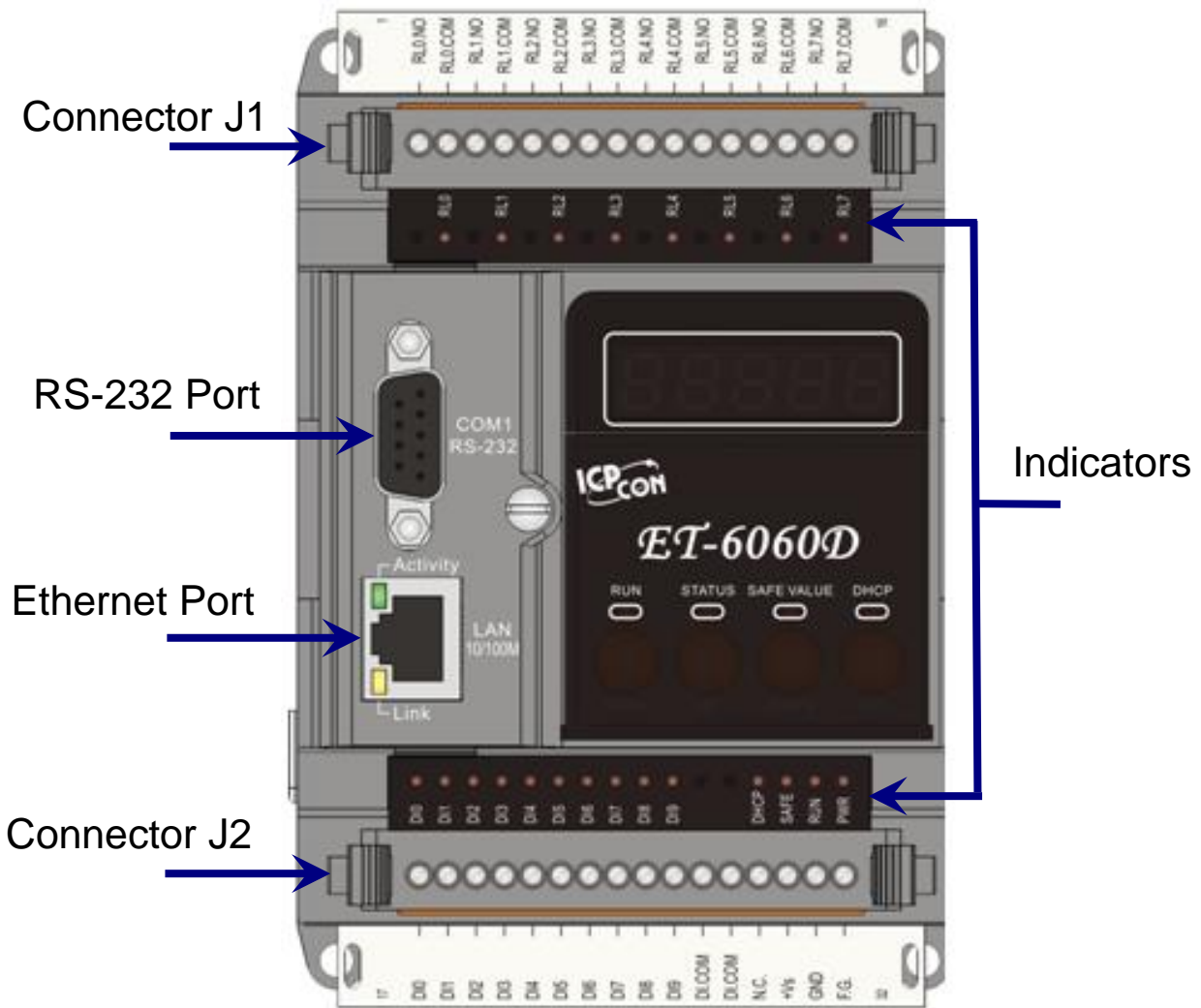
Location: CD: \NAPDOS\ET6000\Document

Firmware:

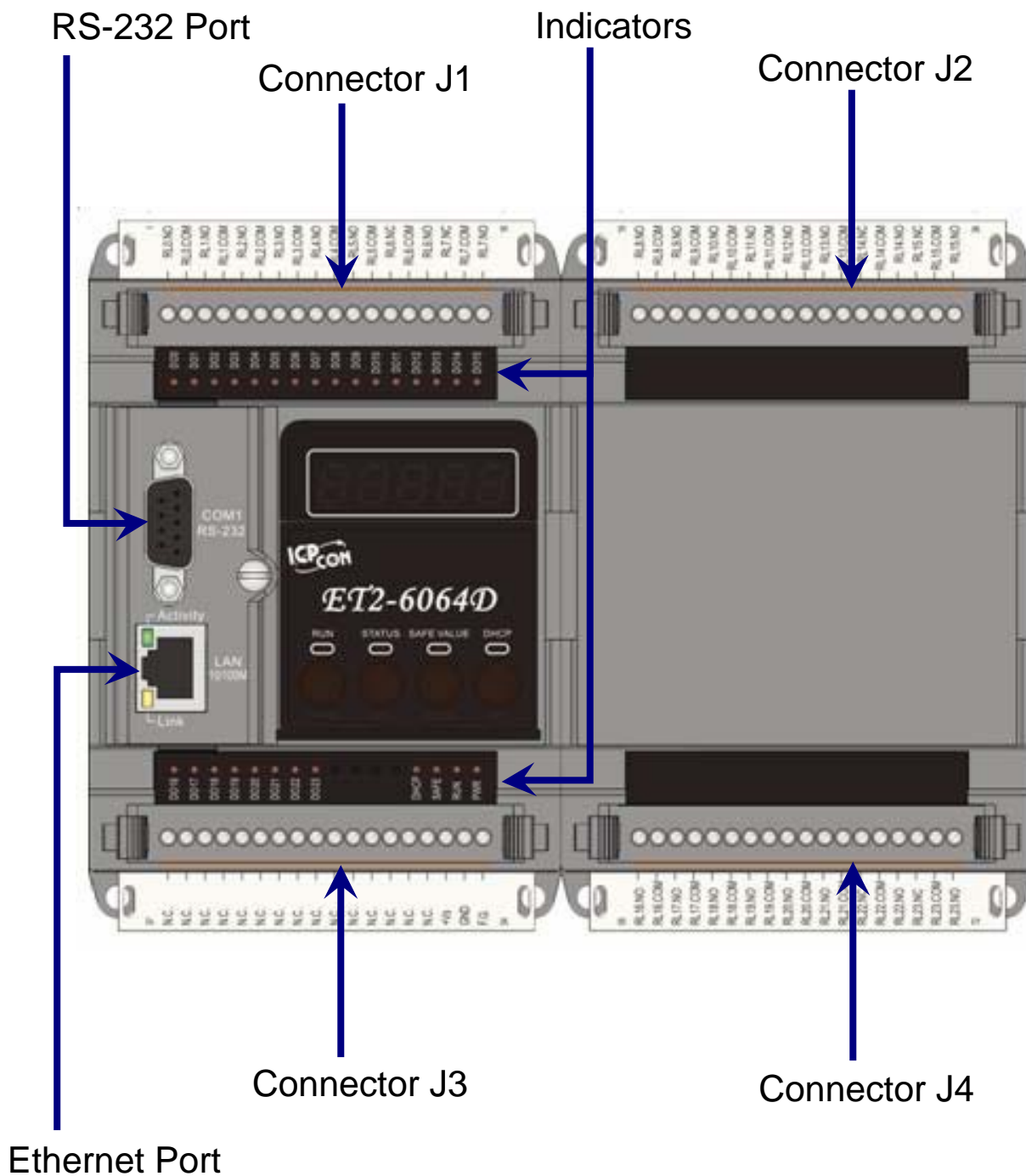
Location: CD: \NAPDOS\ET6000\Firmware

1. Preparation

View of the 1 Unit Module

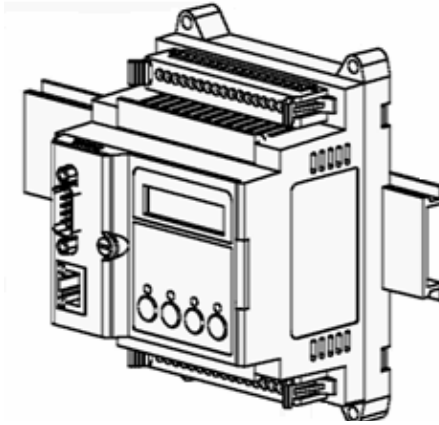


View of the 2 Unit Module

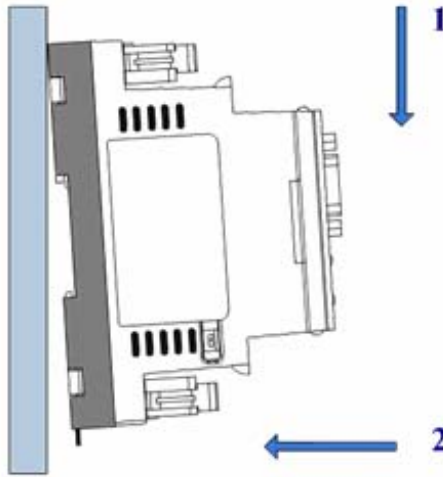


Mounting the ET-6000

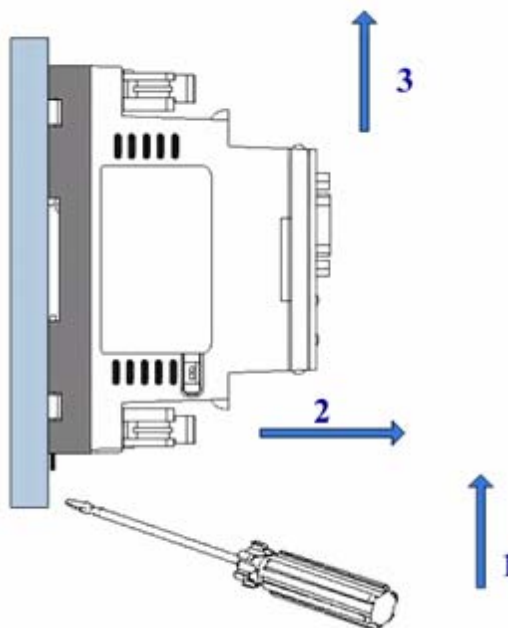
Din-Rail Mounting (One Unit)



Snap the ET-6000 on to the DIN-rail

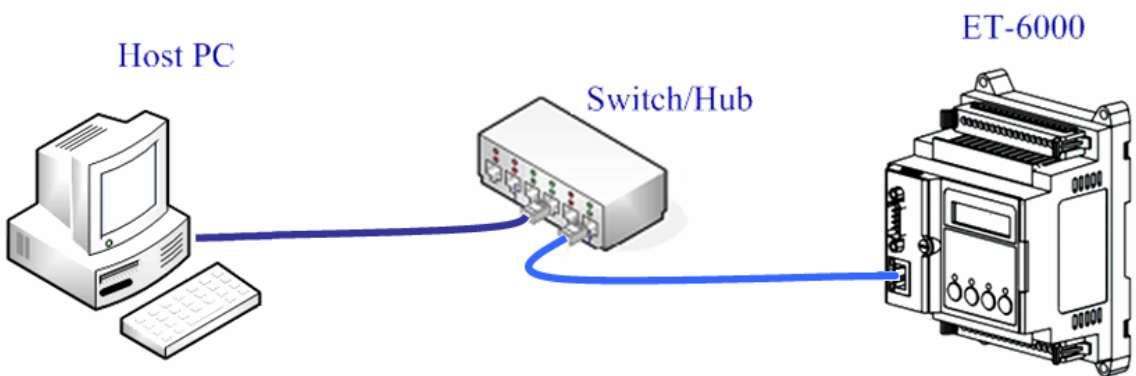
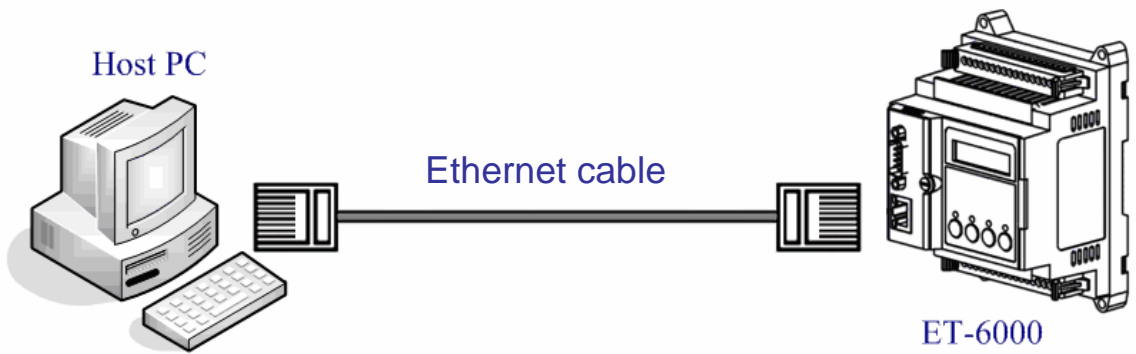


Snap the ET-6000 off from the DIN-rail



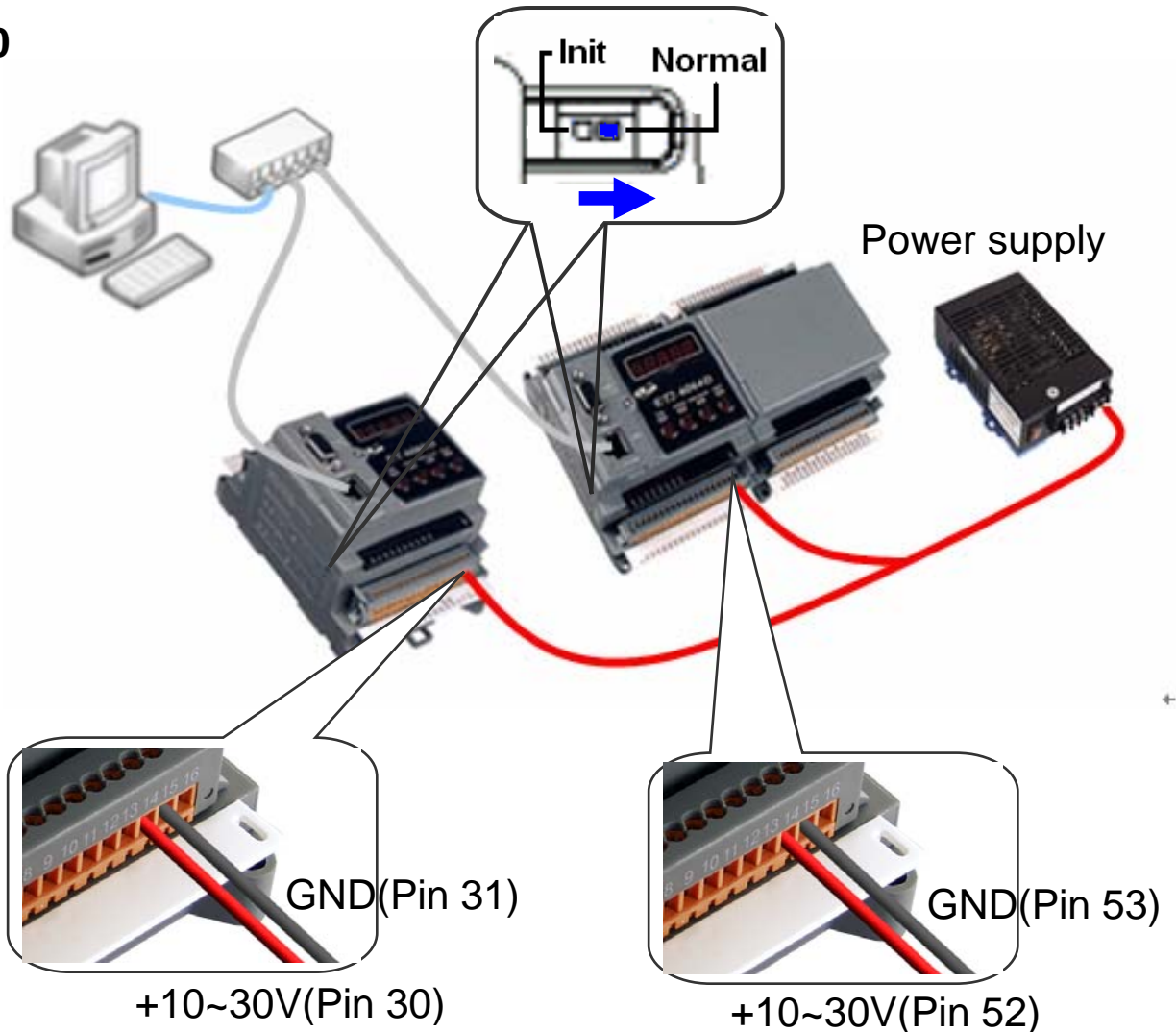
Connecting the ET-6000 into the Ethernet

Link the ET-6000 and host PC direct or link the ET-6000 into the same Ethernet as host PC.



Apply power to the ET-6000

1. Check Init/Normal switch is on Normal position.



2. Apply power (+Vs, GND) to the ET-6000, +Vs can be range from +10V to +30V DC.

3. Check that the 5-digit 7-SEG LED continuously shows the group ID information from 11111 to 44444.

4. Check that the “RUN” LED periodically ON for 0.5 seconds and then OFF for 0.5 seconds.

2. Ethernet Configuration

Configuring the network settings correctly is the most important procedure prior to using ET-6000 controller. The following settings must be configured:

Networking settings: IP, Mask, and Gateway of ET-6000.

Item	Default
IP Address	192.168.255.1
Subnet Mask	255.255.0.0
Gateway	192.168.0.1

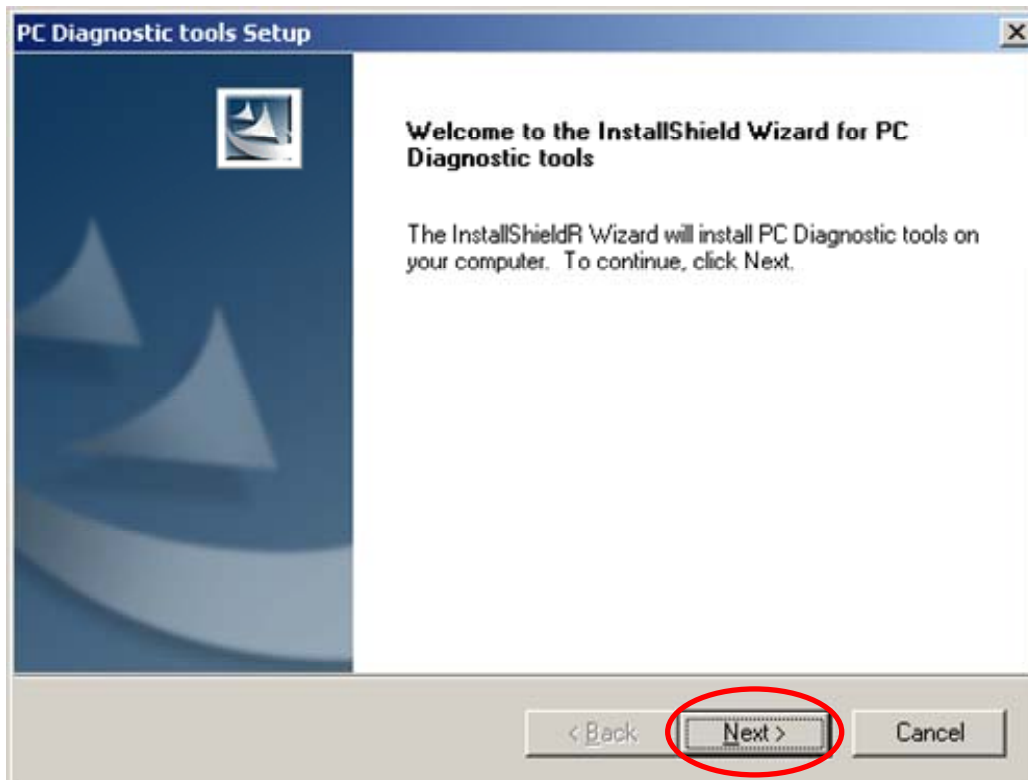
2.1 Installing PCDiag

The PC Diagnostic tool is located on the shipment CD and FTP. The paths are

- *CD:\NAPDOS\ET6000\Tools\PCDiag\Setup_2.0.5*
- *ftp://ftp.icpdas.com/pub/cd/6000cd/napdos/et6000/tools/pcdiag/setup_2.0.5/*

Please follow the steps below:

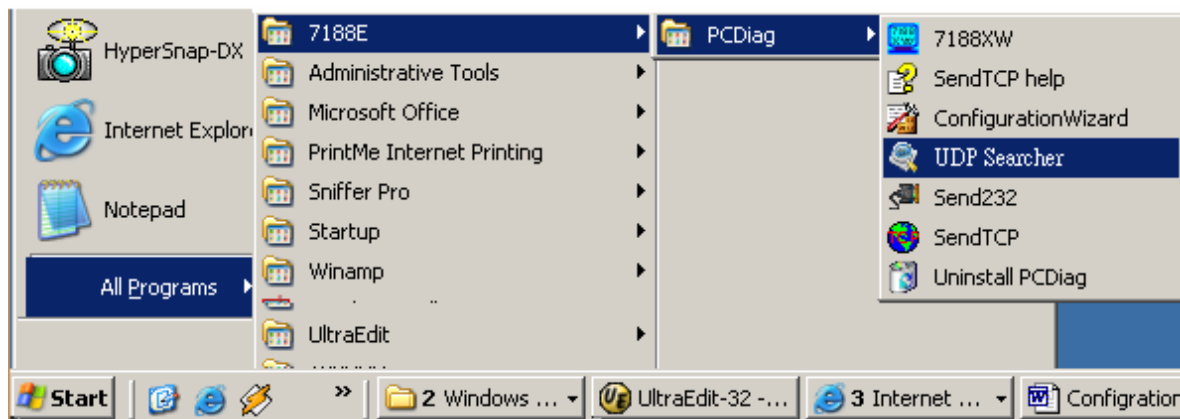
1. **Double Click** the “Setup.exe” to start installing.
2. **Click** on “Next” when the Welcome window opens.



3. **Click** on “Next” to install program files in the default directory, or select an alternative location by pressing “Browser...”.
4. **Select** the folder using in list of “Start Menu” >> “Program”>>, and then click on “Next” to continue
5. **Click** on “Next” to proceed with the installation.
6. **Click** on “Finish” to complete the installation.

2.2 UDP Searcher -- Search the devices


1. Run the UDP Searcher on the PCDiag folder.

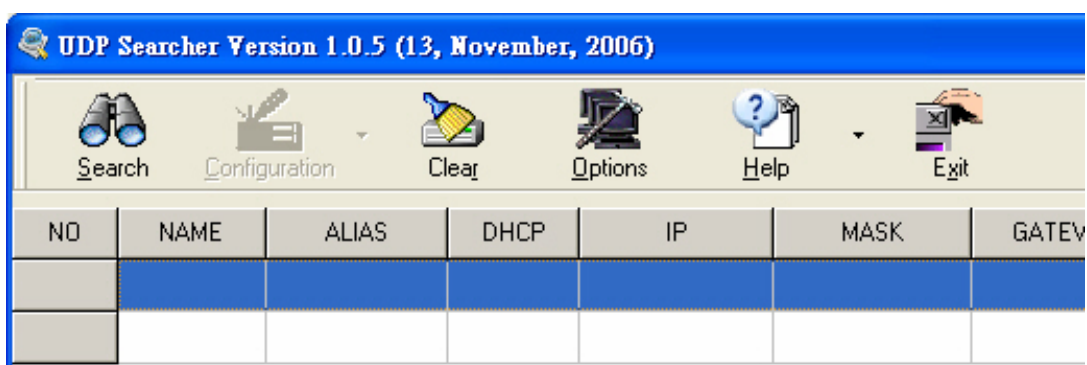


Note:

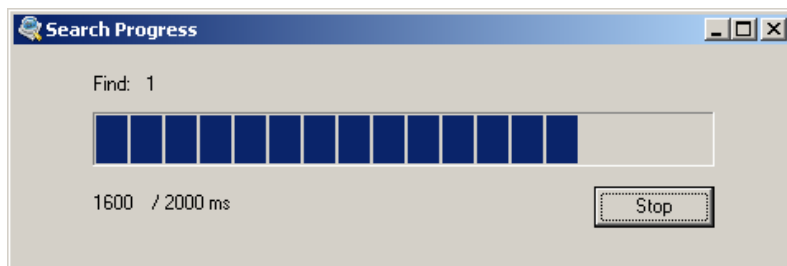
Before using this utility, ensure that you have connected the ET-6000 units installed on the same Ethernet network as the PC is connected to. Please refer to page 5 for Ethernet cable wiring.



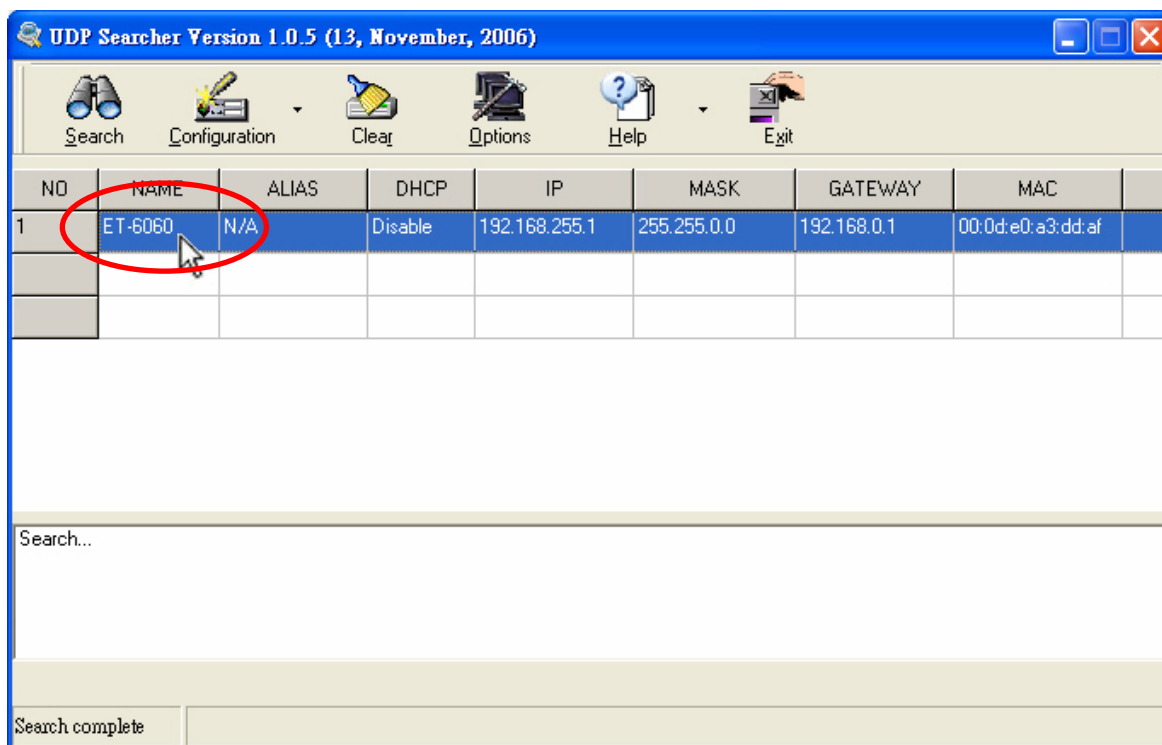
2. Click the  button to scan the ET-6000 modules on the Ethernet network.



The Search Progress window will appear and list the devices found until timeout or users click the Stop button.

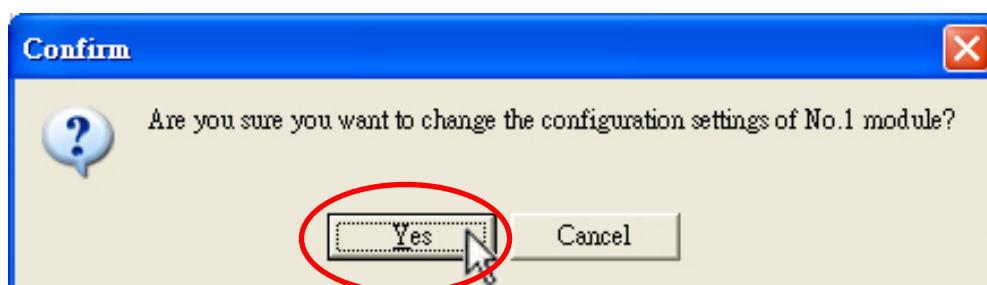
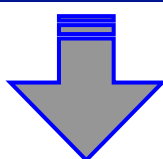
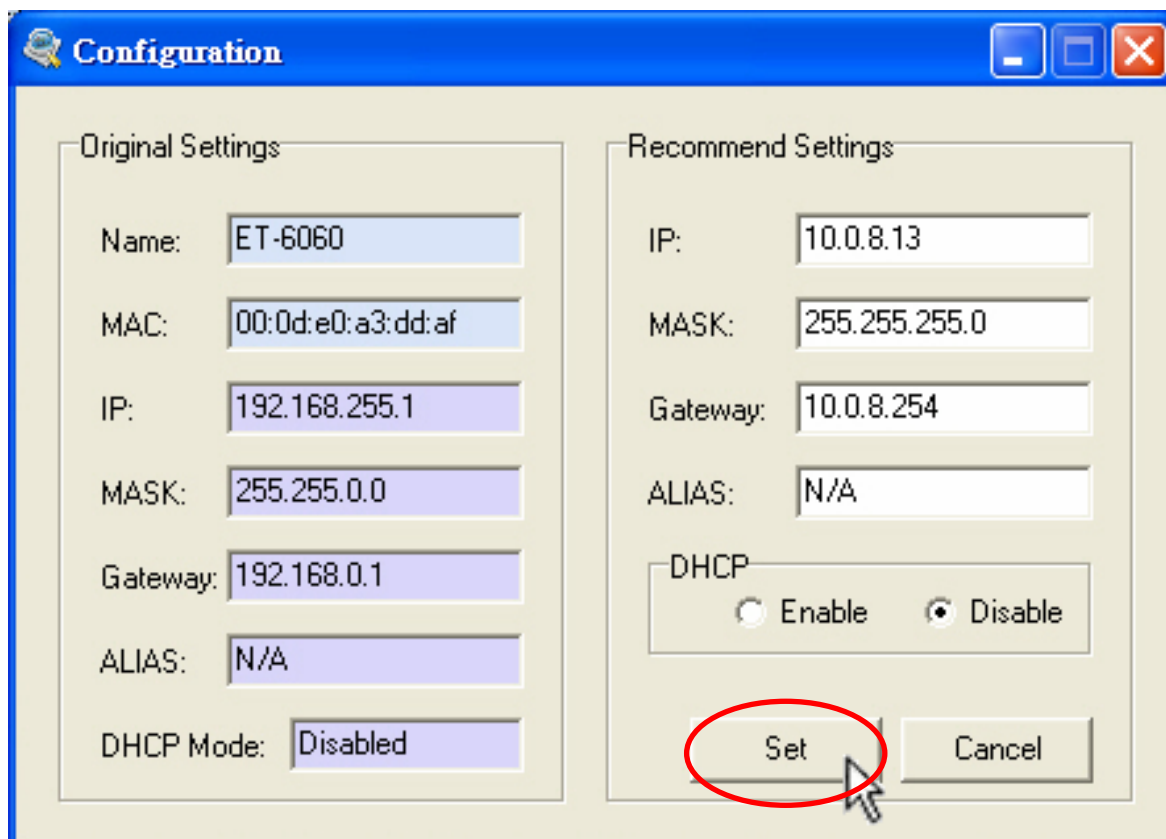


3. **Double-click** the device item to configure IP settings.



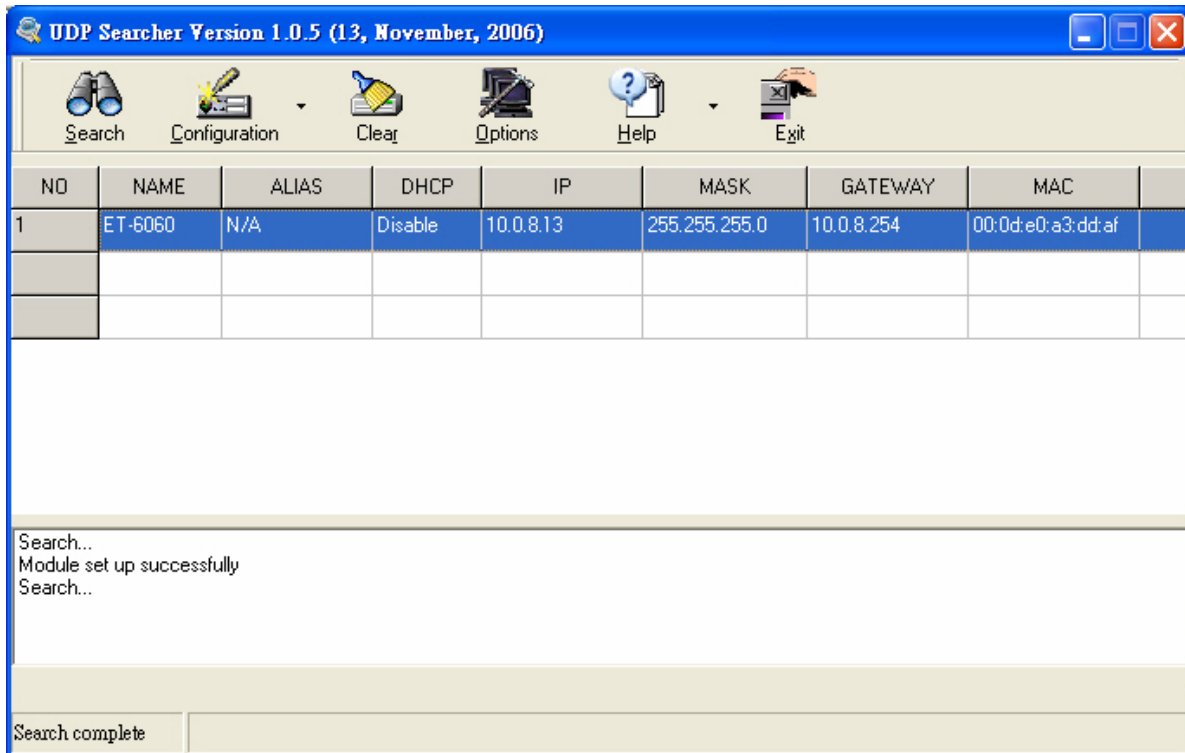
4. Press the “Set” button to use the “Recommend Settings”.

Or change the IP/ Mask/ Gateway address and Alias name in the “Recommend Settings” partition, then press the “Set” button to take effect of the settings.



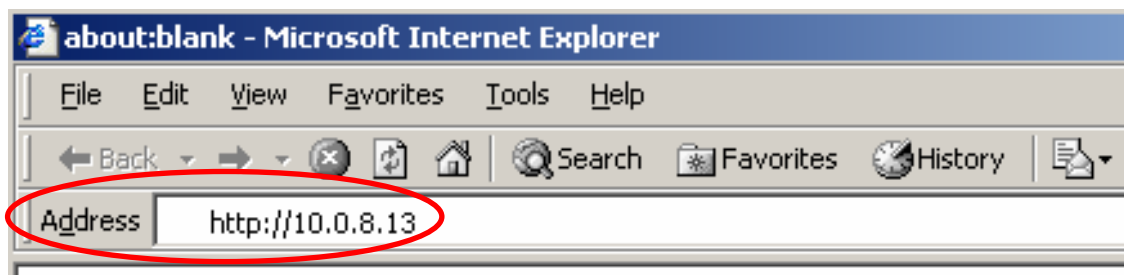
Click the “Yes” button will cause the ET-6000 to reboot to make the settings effectively.

5. **Search** again to check whether the settings have been changed or not.



3. Connect the ET-6000 -- by web browser

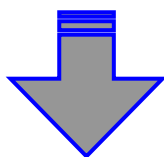
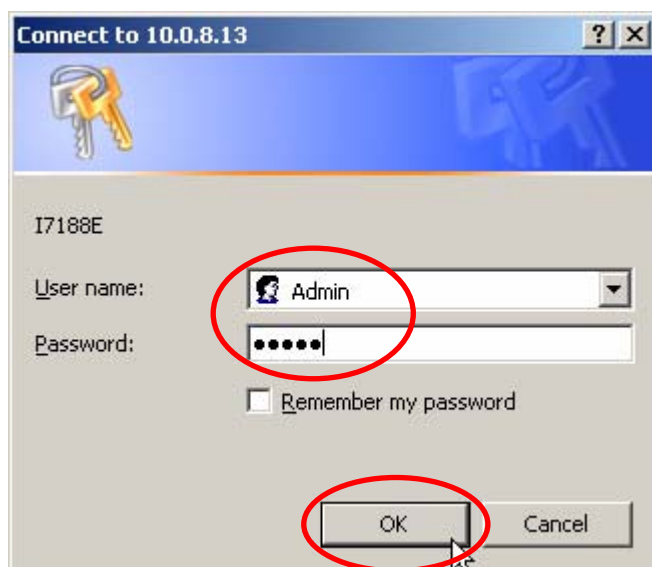
1. **Start up** the web browser (Internet Explorer, Mozilla or Firefox), input the URL address of the ET-6000 (such as `http://10.0.8.13`) and then press "Enter" key to link the ET-6000.



2. **Input** the User name and Password.

Web page Configuration

Item	Default
User name	Admin (Case sensitive)
Password	Admin (Case sensitive)



ET6000 Web page - Microsoft Internet Explorer

File Edit View Favorites Tools Help

Back Forward Stop Home Search Favorites Refresh

Address http://10.0.8.13/ Go Links

http://www.icpdas.com

Main Menu

- Overview
- Configuration
- Authentication
- Web HMI
- Pair Connection
- More Information

Welcome to ET6000 WWW page !

Model Name	ET6052
MAC Address	0:d:e0:a3:dd:af
Module Information	abcc
Firmware Version	V102
OS Version	V202

DI channel	10
DO channel	8
AI channel	0
AO channel	0

General Description

Time 18:32:55 Internet

The brief description of the Web page configuration function is listed on six main functions of the tree structure.

Technical Support

If you have problems about using the ET-6000 series modules, please contact ICP DAS Product Support.

Email: Service@icpdas.com

When requesting technical support, be prepared to provide the following information about your system:

1. Module name and serial number: The serial number can be found printed on the barcode label attached to the cover of the module.
2. Firmware and OS version: See **Overview** on the web browser linked to ET-6000 as showed as page 14 for getting the firmware/OS version information.
3. Host configuration:
 - 3-1. Host type: PC, PLC or other host device
 - 3-2. Operating system (If needed)
 - 3-3. Web browser tool (ex. IE, Firefox, Mozilla ...) and version
4. If the problem is reproducible, please give full details describing the procedure used to reproduce the problem.
5. Specific error messages displayed. If a dialog box with an error message is displayed, please include the full text of the dialog box, including the text in the title bar.
6. If the problem involves other programs or hardware devices, please describe the details of the problem in full.
7. Any comments and suggestions related to the problem are welcome.

ICP DAS will reply to your request by email within three business days.

Jan. 2007
