



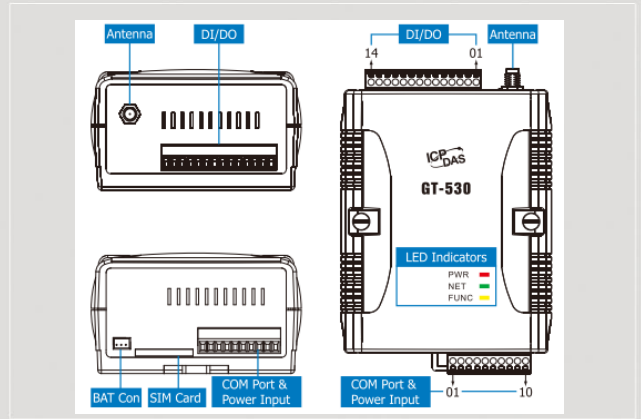
M2M Series Products



Intelligent SMS/GSM Alarm Controller



GT-530



Dimensions

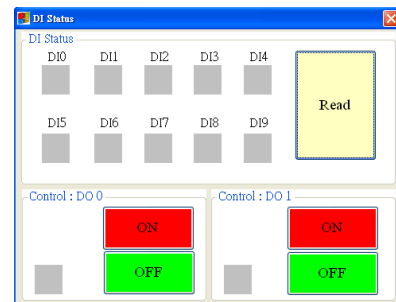
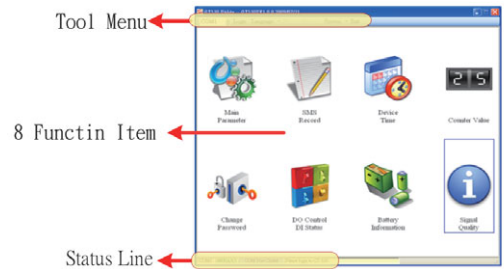
GT-530 is an intelligent SMS controller for industry applications with the simple commands and SMS tunnel function, and power can be input by external power or Li-ion Battery. It supports UNICODE or 7 bit format for users to send SMS messages with in various languages. Applying GT-530, the SMS report can be sent by defined time or DI/counter event trigger. This can be a remote control and alarm system allowing you to use your mobile phone to monitor and control your business from any location. Its alarm facilities provide a flexible way to distribute critical alarm information to any number of mobile phone users. GT-530 can monitor up to 10 digital inputs (6 counters). The GT-530 also has 2 Digital output which can be activated via DI trigger or SMS to control the lamps, pumps, heaters etc.

Features

- Support 900/1800/1900 MHz Tri-band frequency
- Identify ASCII or Unicode SMS Automatically
- Support max. 70 Unicode Characters
- Support max. 140 ASCII Characters
- Built-in ASCII Commands and SMS tunnel Communication Modes
- Max. 10 Default Phone Numbers
- Industrial Design with Surge Protection
- Support SMS setting and control
- 10 DI (6 Counter), 2 DO, 2 RS-232 port
- Digital input support NC/NO/Counter modes
- Send alarm SMS by DI trigger Support simple command to send SMS Support DC +10 ~ +30 V_{DC} Power Input
- Support 3.7 V Li-ion Battery Backup

Utility

ICP DAS provide graphic tool for users to configure GT-530 via RS-232. The utility also can help users to test the GT-530 in the Lab before they apply in the real site.



I/O Interface

I/O	Channel number	Specification
DO	2	Output type : Isolation Load Voltage: +30V Max. Load Current : 100mA Max
DI	10	Input type : Sink or Source, Isolated channel with common power or ground On Voltage : +3.5V~+30V Off Voltage : +1V Max

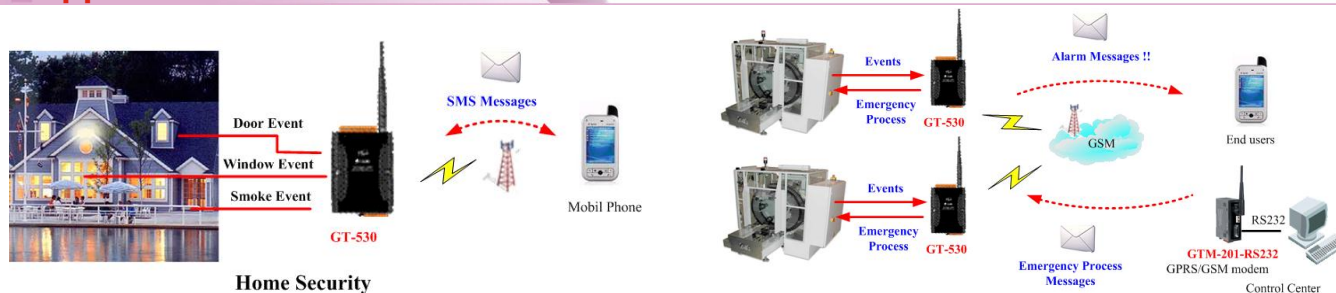


Hardware Specifications

System	
CPU	32 bit, Microprocessor inside with 96MHz
RTC	Gives time(sec, min, hour) & date, leap year compensation from 1980 to 2079
WDT(watchdog)	Yes
Comm. Interface	
COM2	TxD,RxD,GND for configuration
COM3	TxD,RxD,GND for configuration
GSM Interface	
CSD	Up to 14.4 kbps
Compliant to GSM Phase 2/2+	Class 4 (2 W @ 850/900 MHz); Class 1 (1 W @ 1800/1900 MHz)
Coding Schemes	CS 1, CS 2, CS 3, CS 4
SMS	MT, MO, CB, Text and PDU mode
General	
Power Requirement	2W; Unregulated +10V _{DC} ~ +30V _{DC} . Support 3.7V Li-battery backup
LEDs	3 indicator LEDs
Environment	
Operation Temp.	Operation : -25°C to 55°C ; Storage Temp : -40°C to 80°C
Humidity	5~95% non-condensing
Dimensions	91mm x 132mm x 52mm (long*width* high)

LED	Description		
EXT(red)	on	The external Power is active	
	off	The external Power is not active	
STA (orange)		Normal	GSM Fail
	EXT (on)	Blanking (1 sec)	Always on or off
	EXT(off)	Off (sleep mode) blinking (1 sec)(wake up)	Always on
GSM(green)	Blinking	Modem normal	
	off	Modem fail (or Blinking(not 3 sec))	

Applications



Ordering Information

GT-530 CR	Intelligent SMS/GSM Alarm Controller (RoHS)
-----------	---